



INS HIGH PERFORMANCE LED STADIUM LIGHT/SPORTS LIGHT

100+ Patent Certificates
\$1,000,000+ Annual Energy Saving
10,000+ Projects Successfully Installed



OVER 10 YEARS 
EXPERIENCE
www.aokledlight.com

> Features of INS Series

- PC lens arrangement adopts matrix full light cutting design. By adding a concave light retaining wall, excess light can be removed and the effect of receiving & blocking can be achieved. The design scheme can meet users' requirements for light seeing range to a greater extent.
- The overall streamline of the fixture body is beautiful, generous and decent. The back adopts fin type heat dissipation structure, with better heat dissipation effect. Edge sinking design and convection vents, optimize air convection quality, strengthen heat dissipation, fully ensure the life of the fixture.
- Multiple methods of installation and power supply placement to meet different requirements. External or internal power supply.
- Induction mounting hole is reserved. Offer customers more functional options and more convenient for upgrading in the future.
- IP66 protection grade, waterproof structure design + high resistance wire silicone waterproof ring design, double protection, safer. Better protection of the lamp IP performance.
- Super bracket design, bracket strength can support more than 10 times the weight of the fixture body, the safety factor is higher than counterparts.



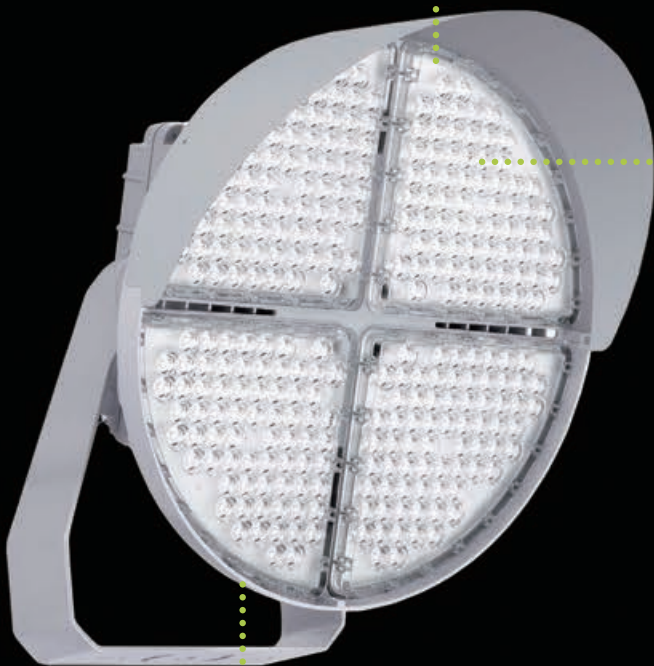
Note: Normal Voltage=100-277VAC, High Voltage=277-480VAC, please evaluate before choosing. For the power supply in the United States and Canada, in case the input voltage fluctuation $\geq 240V$ the High Voltage solution is highly recommended for performance stability. Improper selection will cause damage to the driver or the light.



Better Performance Starts with Better Lighting

> Photometric Design

- Glare can cause problems for athletes and nearby residents. Spillover light causes light pollution in the night sky.
- Solving the problem of reducing light pollution is the primary mission of our product design. While providing a brighter lighting system for the site, we were also concerned about how to reduce the disturbance to the surrounding environment.
- Effective control of light can better reflect the energy conservation and environmental protection of LED lighting equipment. The low glare design of the INS series allows for effective control of light and direction, providing greater comfort for athletes on the field, a better spectator experience, and minimizing light pollution.

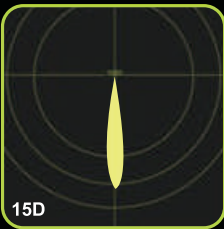


• Modular design, each optic lens is sink-in design with thread to reduce spill light and glare.

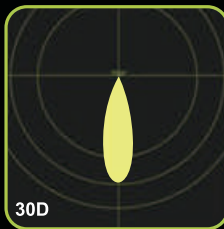


• Visor and laser aiming accessories available and can be field installed.

*As the products are upgraded, the accessories may differ from those described in the pictures.



15D



30D



60D



120D

• Accurate light distribution for different project needs.



• Integral driver (INS-B) with passive cooling technology. Driver housing is easily accessible and swings open to allow for access to components including driver dimming leads.

- Glare & light pollution
- Light spills out

Comfortable uniform lighting effect •
No upper light pollution •
Better visual experience •

*Due to the constant improvements in product development, individual parameters might change. Please refer to our sales or R&D team for most up-to-date content as specifications are subject to change without notice.

> Application Reference



TYPICAL LAYOUT BASEBALL FIELD WITH 6 POLE DESIGN



Fixture: 1500W HID
Fixture Count: 46
Average Light Level: 50fc (infield) 30fc (outfield)
Total Wattage: 74,150W

Fixture: 720W INS
Fixture Count: 44
Average Light Level: 50fc (infield) 30fc (outfield)
Total Wattage: 31,680W

*Due to the constant improvements in product development, individual parameters might change. Please refer to our sales or R&D team for most up-to-date content as specifications are subject to change without notice.

➤ Application Reference



*Due to the constant improvements in product development, individual parameters might change. Please refer to our sales or R&D team for most up-to-date content as specifications are subject to change without notice.

Parameter Table

| Electrical Data | | | | | | |
|--|---|----------------|---------------|--|-------------|-------------|
| Model | AOK-315WiNS | | AOK-380WiNS | AOK-460WiNS | AOK-580WiNS | AOK-720WiNS |
| Power(W) | 315W | | 380W | 460W | 580W | 720W |
| Input voltage | Normal Voltage=100-277VAC, High Voltage=277-480VAC, please read *Note-1 before choosing. | | | | | |
| THD | < 20% | | | | | |
| PF | > 0.90 | | | | | |
| Control Option | DALI, 1-10V/PWM/Timer dimming, Nema, Zhaga/Presence detection sensor. | | | | | |
| UGR | <19 | | | | | |
| Operating temperature | -40°C to 50°C (-40 °F to 122 °F) | | | | | |
| Driver brand | Meanwell/Inventronics | | | | | |
| Surge Protection | 10kV/20kV optional | | | | | |
| Photometric Data | | | | | | |
| Efficacy(lm/W) (CRI 70Ra, 5000K) (Std Dev ±3%) | 15D | 138.4 lm/W | 139.1 lm/W | 139.7 lm/W | 135.3 lm/W | 135.3 lm/W |
| | 30D | 166.6 lm/W | 157.1 lm/W | 162.0 lm/W | 160.0 lm/W | 152.9 lm/W |
| | 60D | 167.9 lm/W | 156.8 lm/W | 167.6 lm/W | 163.1 lm/W | 156.3 lm/W |
| | 120D | — | — | 169.8 lm/W | 165.5 lm/W | 168.4 lm/W |
| Luminous flux (lm) (Std Dev ±3%) | 15D | 43261 lm | 52098 lm | 63821 lm | 78187 lm | 96089 lm |
| | 30D | 52566 lm | 58621 lm | 73677 lm | 92329 lm | 109447 lm |
| | 60D | 52929 lm | 58622 lm | 77315 lm | 93205 lm | 112023 lm |
| | 120D | — | — | 78108 lm | 95990 lm | 120878 lm |
| ULOR | = 0%, @ Luminaire inclination 0° | | | | | |
| CCT | 3000K, 4000K, 5000K, 5700K, 6500K | | | | | |
| CRI | Ra70, Ra80, Ra90 optional | | | | | |
| Beam angle | 15D/30D/60D/120D | | | | | |
| LED Manufacturer | LUMILEDS | | | | | |
| LED model | Lumileds 5050 | | | | | |
| Working current of single LED (Standard product) | 15D | 75mA | 90mA | 66mA | 85mA | 105mA |
| | 30D | 47mA | 56mA | 39mA | 50mA | 63mA |
| | 60D | 47mA | 56mA | 39mA | 50mA | 63mA |
| | 120D | 47mA | 56mA | 39mA | 50mA | 63mA |
| Lens | Polycarbonate, modular design | | | | | |
| Lifespan | L90B10 > 100000hrs, @Ta 25°C | | | | | |
| Mechanical Data | | | | | | |
| IP/IK | IP66/IK10, according to standard EN 60529 and EN 62262 | | | | | |
| Vibration resistance | 3G, conform to standard IEC 68-2-6. | | | | | |
| SCx(EPA, Fixture body) | Front: 0.204386m²(2.2ft²) Side: 0.115943m²(1.248ft²) | | | Front: 0.285212m²(3.07ft²) Side: 0.132665m²(1.428ft²) | | |
| Housing/Materials | Heavy-duty die-cast aluminum (EN AC-46100) | | | | | |
| Surface treatment | Anti-UV thermosetting polyester/80 micron epoxy primer, Anti-UV thermosetting polyester (for extremely corrosive environments). | | | | | |
| Painting | Black, Silver gray, Custom request | | | | | |
| Cable | Pre-wired with a 30 cm cable (Other lengths on request) | | | | | |
| Mounting | TYPE A/TYPE B/TYPE C/TYPE D | | | | | |
| Others | | | | | | |
| Warranty | 5 years (Warranty extension up to 10 years on request) | | | | | |
| Certification | UL/cUL/SAA/CE/FCC/ENEC/TUV,For other certificates please request | | | | | |
| Product size | TYPE-A | φ468*343mm | | φ550*336mm | | |
| | TYPE-B | φ468*559*407mm | | φ550*602*315mm | | |
| Net weight | TYPE-A | 10.3kg | 10.3kg | 16.08kg | 16.08kg | 16.08kg |
| | TYPE-B | 16.5kg | 16.5kg | 23.2kg | 23.2kg | 23.2kg |
| TYPE-A | 540*540*415mm | | 640*640*435mm | | | |
| TYPE-B | 550*555*410mm | | 640*640*435mm | | | |
| TYPE-A | 13.27kg | | 13.27kg | 19.68kg | 19.68kg | 19.68kg |
| TYPE-B | 19.5kg | | 19.5kg | 26.8kg | 26.8kg | 26.8kg |
| Application field | Suitable for stadium, sports field, port, railway station | | | | | |

* Note-1: For the power supply in the United States and Canada, in case the input voltage fluctuation ≥240V the High Voltage solution is highly recommended for performance stability. Improper selection will cause damage to the driver or the light.

Construction

- Heavy duty die cast aluminum housing.
- Light engine is thermally isolated from the driver compartment.
- UV Stabilized polyester powder paint finish rated for 1000 hour salt spray.
- Easy maintenance access to electrical components.
- Rugged, weather-tight design and 3G Vibration ratings ensure durability even in harsh environments.

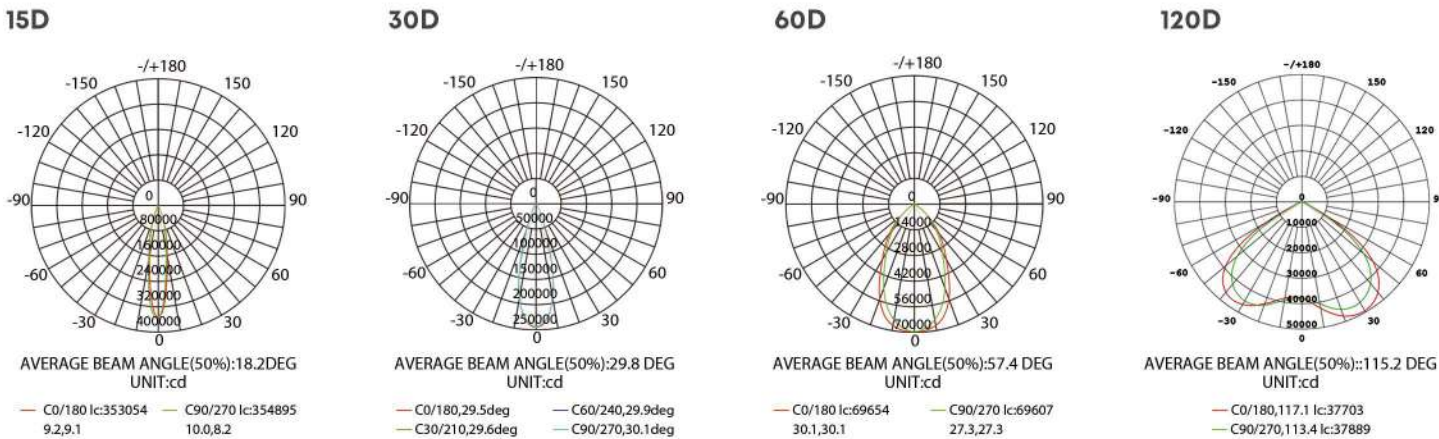
Optics

- Four available light distributions: 15°, 30°, 60°, 120°.
- High impact UV stabilized polycarbonate outer lens protects LEDs and allows for cleaning and debris removal.

Ordering Information

| AOK | | | | | | | |
|----------|-------------|-----------------|-------------------|------------------|--------------|-------------------------|----------------|
| WATTS | VOLTAGE | LED CHIPS | TYPE OF SENSOR | CCT&CRI | DISTRIBUTION | MOUNT | HOUSING |
| 315W iNS | NV=100-277V | L5=Lumileds5050 | 00=Without Sensor | 3070=3000K 70CRI | 15D=15° | A=Top Fixed | BK=Black |
| 380W iNS | HV=277-480V | V2=Lumileds V2 | DV=Dimmable | 3080=3000K 80CRI | 30D=30° | B=With driver box | SG=Silver Grey |
| 460W iNS | | | PH=Photocell | 4070=4000K 70CRI | 60D=60° | C=Split mode | |
| 580W iNS | | | | 4080=4000K 80CRI | 120D=120° | D=Yoke Mount | |
| 720W iNS | | | | 5070=5000K 70CRI | | | |
| | | | | 5080=5000K 80CRI | | | |
| | | | | 5770=5700K 70CRI | | | |
| | | | | 5780=5700K 80CRI | | | |
| | | | | | | Accessories | |
| | | | | | | SPD 10kV, 20kV optional | |
| | | | | | | Light visor | |
| | | | | | | Laser aiming | |

Photometrics

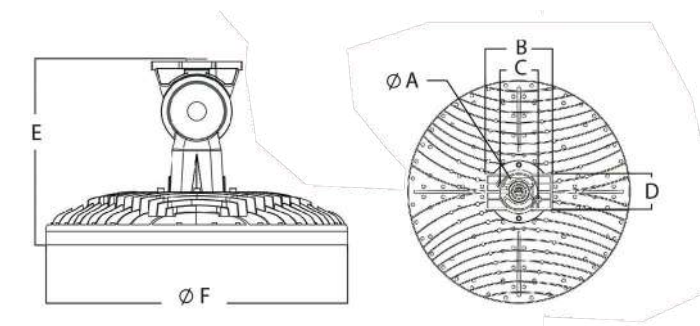


INS Series Specification Sheet

*Due to the constant improvements in product development, individual parameters might change. Please refer to our sales or R&D team for most up-to-date content as specifications are subject to change without notice.

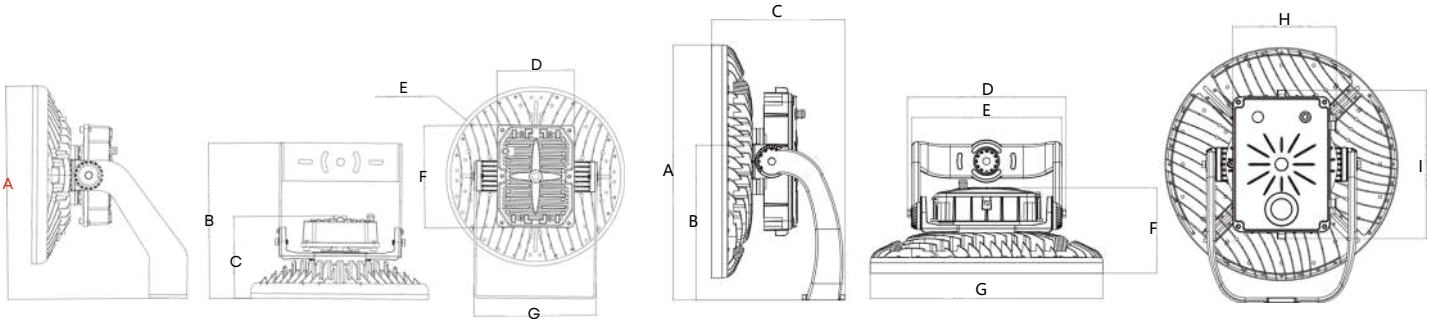
Dimensions

INS-A



| 315W-380W | | | | | |
|-------------|--------------|-------------|-------------|---------------|---------------|
| A | B | C | D | E | F |
| 7.3cm(2.9") | 16.5cm(6.5") | 9.3cm(3.6") | 9.0cm(3.5") | 34.3cm(13.4") | 46.8cm(18.3") |
| 460W-720W | | | | | |
| A | B | C | D | E | F |
| 7.3cm(2.9") | 7.3cm(2.9") | 9.3cm(3.6") | 9.0cm(3.5") | 33.6cm(13.2") | 55.0cm(21.6") |

INS-B



| 315W-380W | | | | 460W-720W | | | | |
|----------------|----------------|----------------|------------|---------------|---------------|----------------|---------------|---------------|
| A | B | C | D | A | B | C | D | E |
| 55.96cm(22.0") | 40.68cm(16.0") | 21.4cm(8.4") | 20.3cm(8") | 60.2cm(23.7") | 36.6cm(14.4") | 31.48cm(12.4") | 37.5cm(14.7") | 35.4cm(13.9") |
| E | F | G | | F | G | H | I | |
| 46.8cm(18.4") | 26.8cm(10.5") | 32.01cm(12.6") | | 20.25cm(8.0") | 55.0cm(16") | 24.5cm(9.6") | 35.1cm(13.8") | |

Accessories

Bracket Options



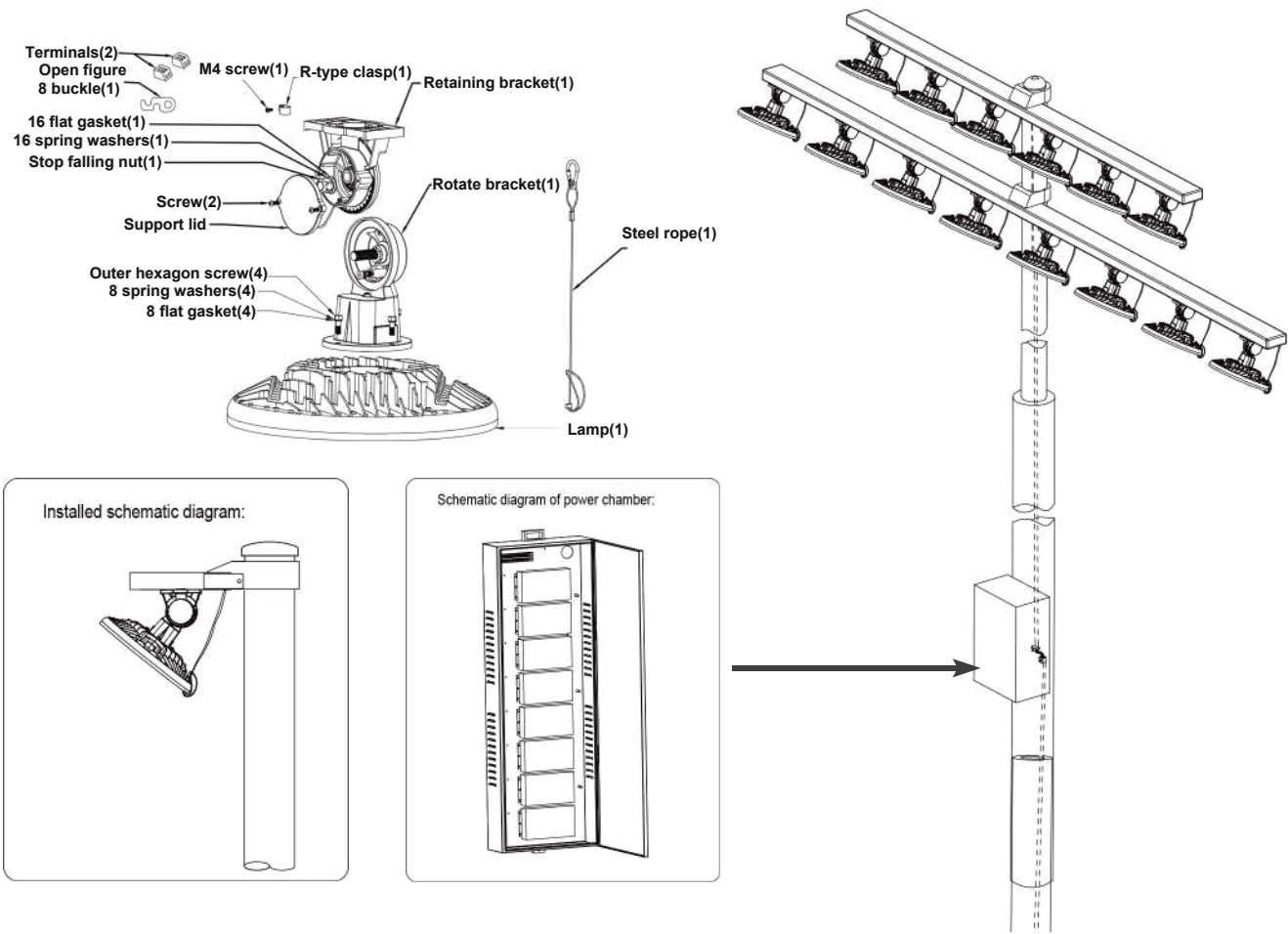
INS-A Top Fixed Installation INS-B Under Mount Yoke (with driver box) INS-C Under Mount Yoke (split mode) INS-D Yoke Mount



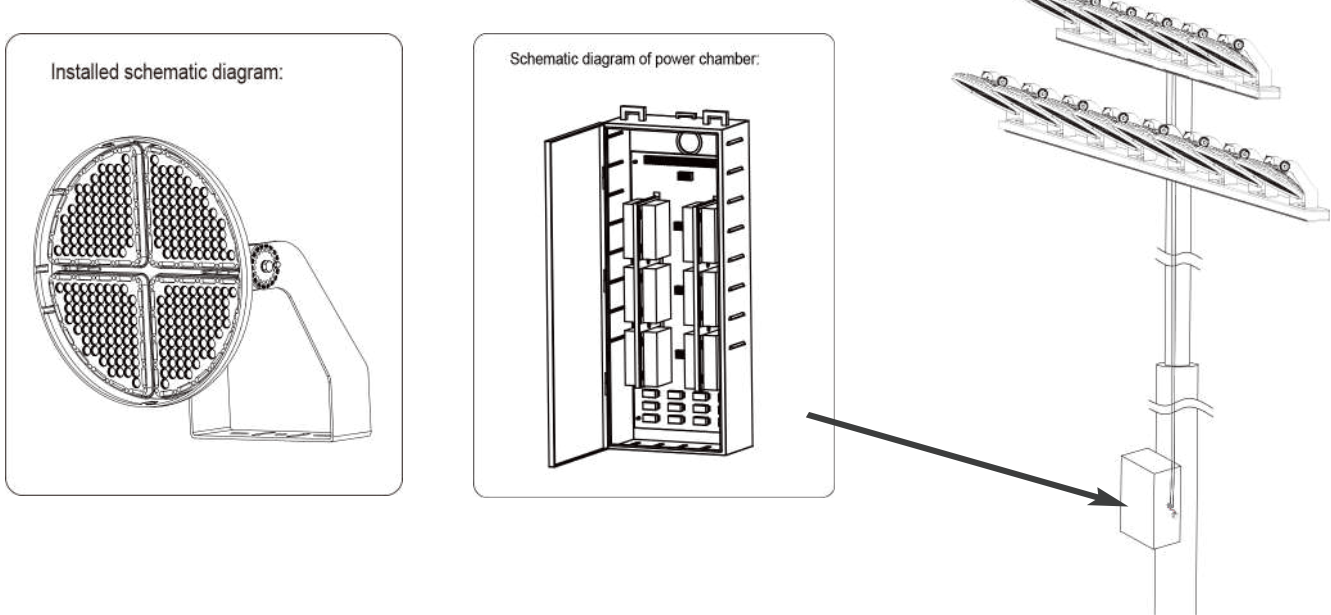
*As the products are upgraded, the accessories may differ from those described in the pictures. Please consult with our sales team for updated details and order separately.

Recommended Installation

INS-A



INS-C





Illuminate Your Future



5 Year Limited Warranty,
10 Year Preferred Warranty.
Please consult with our sales for detailed agreement.

Wally@aokledlight.com
www.aokledlight.com
+1 626-986-4050 (US)
+86 755 2357 9148 (CN)

Manufacturing: Building 1 & 4, St. George's Science and Technology Industrial Park, Shajing Street, Shenzhen, China, 518124.
Fuzhou HQ: Room 301, Yujing Business Center Zone 1, No. 12 Baihuazhou road, Cangshan district, Fuzhou, China, 350007
NorthAmerica HQ: 18541 E Gale Ave, City of Industry, CA91748 USA

Copyright ©2023 AOK LED LIGHT CO., LTD. All Right Reserved.