

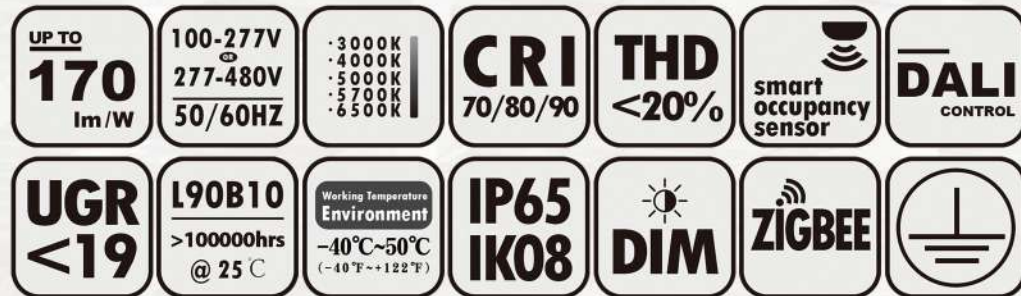


IOH LED Highbay Light
60W-240W

**Better Performance
Starts From Better Lighting**
www.aokledlight.com

> Features of OH Series

- OH series is designed for Indoor and Industrial lighting, a superior high output, high efficiency LED high bay light, featuring a unique optical design that virtually eliminates glare with minimal impact on performance. It is available in a variety of distributions for lighting applications such as gyms, industrial, multi-purpose rooms in schools, churches, and retails, etc.
- Up to 150lm/W and 170lm/W optional(Std. Dev $\pm 5\%$); CCT: 3000K~6500K; CRI: Ra 70~90 available.
- Die-cast aluminum, UV stabilized polyester powder paint finish.
- Light engine is thermally isolated from driver components.
- Rugged, weather-tight design and 3G Vibration ratings ensure durability even in harsh environments.
- Installation: Fixture hook come as standard, pendant mount from 3/4" threaded conduit optional.
- Symmetrical for easy one-for-one replacement of existing high bays.
- 1-10V dimming driver standard, Occupancy sensor, motion sensor, DALI, ZIGBEE wireless control optional.



Note: Normal Voltage=100-277VAC, High Voltage=277-480VAC, please evaluate before choosing. For the power supply in the United States and Canada, in case the input voltage fluctuation $\geq 240V$ the High Voltage solution is highly recommended for performance stability. Improper selection will cause damage to the driver or the light.



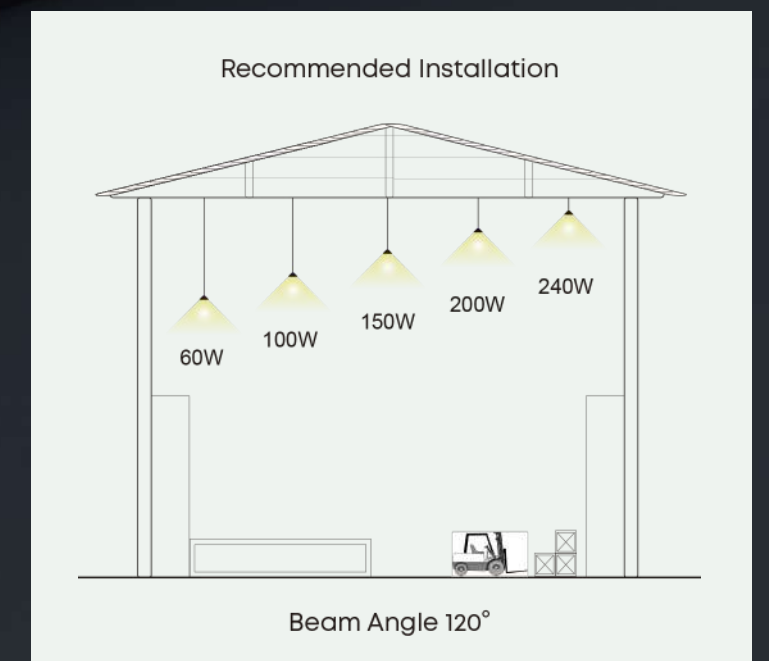
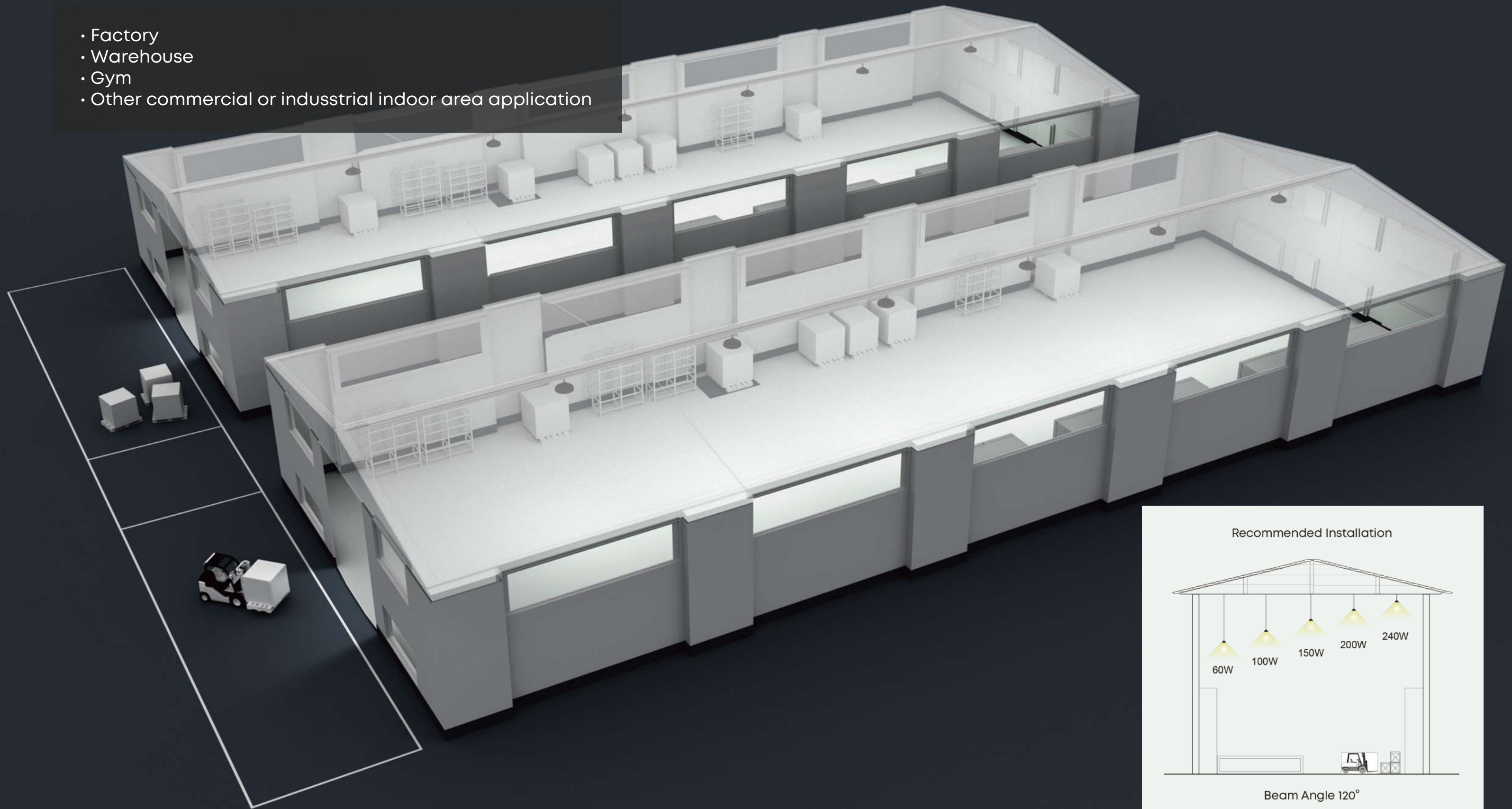
CONSTRUCTION FEATURES



1. Stainless Eye bolt (or Hook)
2. Waterproof connector easy to replace driver
3. Top level performance light source system efficacy up to 165lm/W
4. Gasket ring
5. Top level performance 1-10V dimmable driver
6. Die casting unibody aluminum fixture housing in supreme heat dissipation ability
7. Optical grade polycarbonate lens 60°/90°/120°/130° optional

> Application Reference

- Factory
- Warehouse
- Gym
- Other commercial or industrial indoor area application

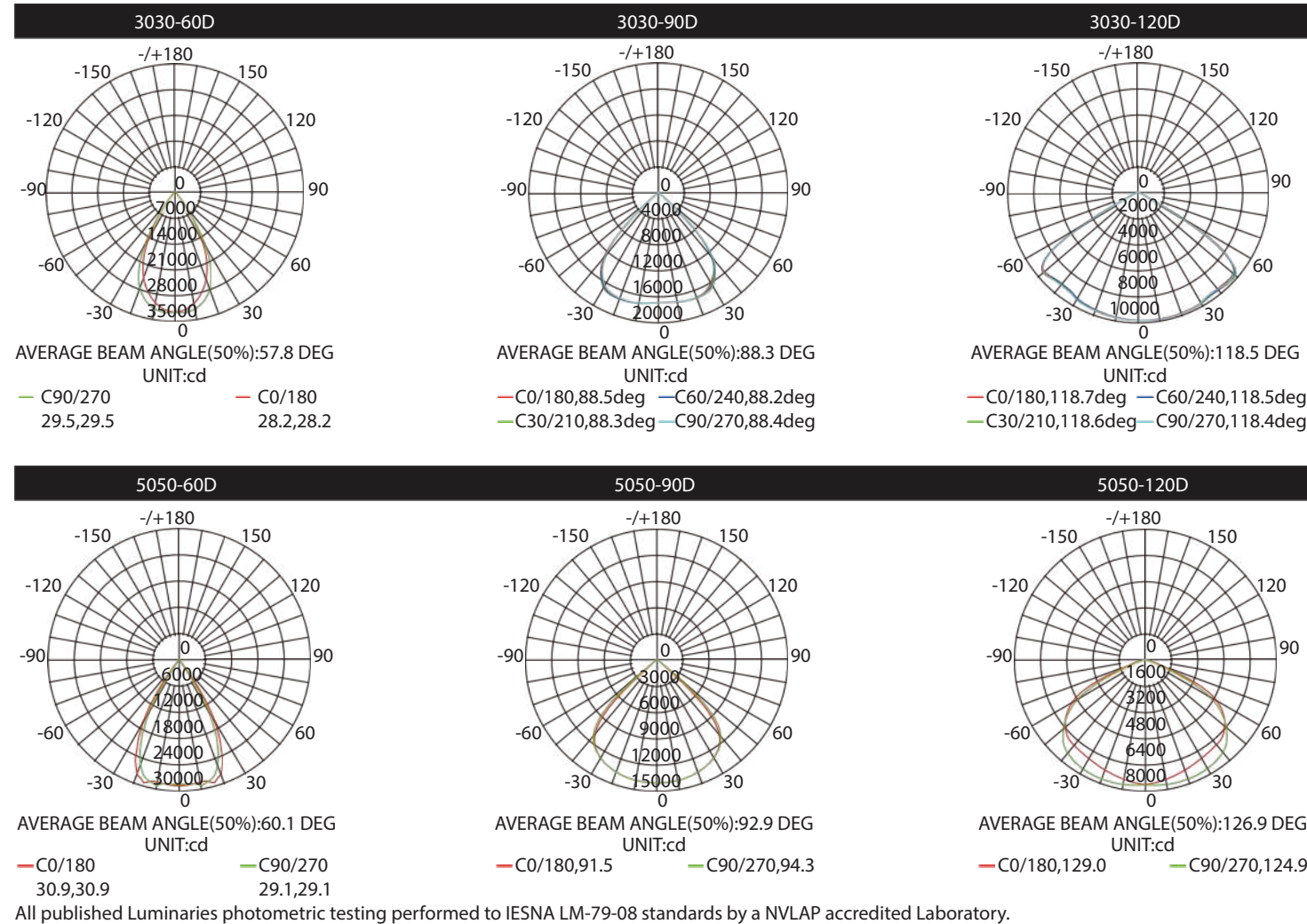


Parameter Table

MODEL	WATTS	REPLACE MHL	LUMINAIRE LUMEN OUTPUT	IP&IK	NW	PACKING DIMENSION
AOK-60WoH	60W	150W-150LPW 200W-170LPW	9000LM / 60° 9240LM / 90° 9060LM / 120° 10440LM / 60° 10682LM / 90° 10059LM / 120°	IP40&IK08	6.4lbs (2.9kg)	"31*31*21cm (12.2*12.2*8.2")"
AOK-100WoH	100W	300W-150LPW 350W-170LPW	15000LM / 60° 15100LM / 90° 15200LM / 120° 16724LM / 60° 16672LM / 90° 15788LM / 120°	IP65&IK08	6.4lbs (2.9kg)	"31*31*21cm (12.2*12.2*8.2")"
AOK-150WoH	150W	400W-150LPW 500W-170LPW	22500LM / 60° 22950LM / 90° 22650LM / 120° 25851LM / 60° 25738LM / 90° 24881LM / 120°	IP65&IK08	10lbs (4.6kg)	"38*38*22cm (15*15*8.7")"
AOK-200WoH	200W	600W-150LPW 750W-170LPW	28200LM / 60° 30600LM / 90° 30000LM / 120° 33982LM / 60° 34529LM / 90° 33159LM / 120°	IP65&IK08	13.7lbs (6.2kg)	"47*47*23cm (18.5*18.5*9")"
AOK-240WoH	240W	750W-150LPW 850W-170LPW	36000LM / 60° 36720LM / 90° 36240LM / 120° 39802LM / 60° 40303LM / 90° 39127LM / 120°	IP65&IK08	13.7lbs (6.2kg)	"47*47*23cm (18.5*18.5*9")"

Important note: The provided information is solely for reference; the official measurement report holds higher authority.

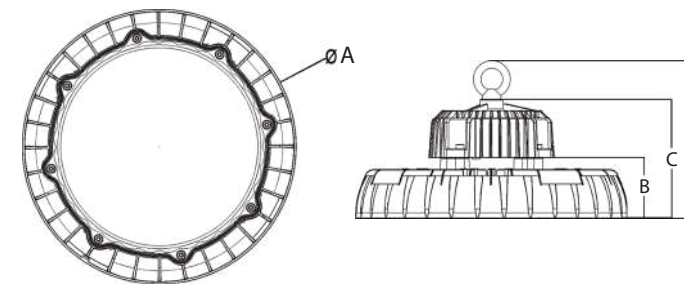
Photometrics



Ordering Information

AOK	WATTS	VOLTAGE	LED CHIPS	TYPE OF SENSOR	CCT&CRI	DISTRIBUTION	MOUNT	OPTION	HOUSING
	60WoH 100WoH 150WoH 200WoH 240WoH	NV=100-277V HV=277-480V	L3=LUMILEDS 3030 L5=LUMILEDS 5050	00=Without Sensor SN=Motion sensor PH=Photocell DV=Dimmable	3070=3000K 70CRI 4070=4000K 70CRI 5070=5000K 70CRI 5770=5700K 70CRI 6570=6500K 70CRI 3080=3000K 80CRI 4080=4000K 80CRI 5080=5000K 80CRI 5780=5700K 80CRI 6580=6500K 80CRI	60D=60DEG 90D=90DEG 120D=120DEG 130D=130DEG	Eye bolt Yoke Mount Chain Mount Hook Mount	BLACK RING ORANGE RING 10% UP LIGHT LIGHT SHIELD	BK=Black

Dimension



A	B	C	D
Dimen sions of 60W and 100W models			
24.8cm/9.8'	7.1cm/2.8'	13.8cm/5.4'	18.2cm/7.2'
Dimensions of 150W model			
31.9cm/12.6'	7.1cm/2.8'	13.8cm/5.4'	18.3cm/7.2'
Dimensions of 200W and 240W models			
40.0cm/15.8'	7.1cm/2.8'	14.1cm/5.5'	20.2cm/7.5'

Mount & Accessories



OH Series Specification Sheet

*Due to the constant improvements in product development, individual parameters might change. Please refer to our sales or R&D team for most up-to-date content as specifications are subject to change without notice.



Illuminate Your Future

5 **10** **WARRANTY**
5 Year Limited Warranty,
10 Year Preferred Warranty.
Please consult with our sales for detailed agreement.

wally@aokledlight.com
www.aokledlight.com
+1 626-986-4050 (US)
+86 755 2357 9148 (CN)

Manufacturing: Building 1 & 4, St. George's Science and Technology Industrial Park, Shajing Street, Shenzhen, China, 518124.
Fuzhou HQ: Room 301, Yujing Business Center Zone 1, No. 12 Baihuazhou road, Cangshan district, Fuzhou, China, 350007
NorthAmerica HQ: 18541 E Gale Ave, City of Industry, CA91748 USA

Copyright ©2023 AOK LED LIGHT CO., LTD. All Right Reserved.