



INF LED STADIUM LIGHT
LED FLOOD LIGHT

100+ Patent Certificates
\$1,000,000+ Annual Energy Saving
10,000+ Projects Successfully Installed



OVER YEARS 
10 EXPERIENCE
www.aokledlight.com



> Features of INF Series

INF series is designed for exterior sports lighting, a superior high output, high efficiency LED flood light, featuring a unique optical design that virtually eliminates glare with minimal impact on performance. It is available in a variety of flood distributions for lighting applications such as large areas, port and rail centers, exterior sports.

- Precisely engineered optics which makes the light more efficient and concentrated for stadium lighting. It also reduces glare and avoids light trespass in the wrong area.
- Innovative design, flexible, and accurate to adjust the mounting angle. Aluminum alloy materials, anti-corrosion.
- The tempered glass prevents the PC lens from yellowing when the fixture is exposed. It also protects the lens from sand and dust deposition. Ideal for outdoor applications.

UP TO 150 lm/W	100-277V 277-480V 50/60HZ	L90B10 >100000hrs @ 25°C	Working Temperature Environment -40°C~50°C (-40°F~+122°F)	IP66 IK08	3G VIBRATION TESTING
THD <20%	UGR <20	CRI 70/80/90	DIM	ULR =0	

Note: Normal Voltage=100-277VAC, High Voltage=277-480VAC, please evaluate before choosing. For the power supply in the United States and Canada, in case the input voltage fluctuation $\geq 240V$ the High Voltage solution is highly recommended for performance stability. Improper selection will cause damage to the driver or the light.



Laser aiming & Visor
Optional



Laser aiming

INF-D

INF-SG

Better Performance Starts with Better Lighting

*As the products are upgraded, the accessories may differ from those described in the pictures.

5 **10** **WARRANTY**
5 Year Limited Warranty,
10 Year Preferred Warranty.
Please consult with our sales for detailed agreement.

wally@ookledlight.com
+1 626-986-4050 (US)
+86 755 2357 9148 (CN)

©2023 AOK LED LIGHT CO., LTD. All Right Reserved.



> Lighting for Gaming



1- Optical Lens:

Precisely engineered optics which makes the light more efficient and concentrated for stadium lighting. It also reduces glare and avoids light trespass in the wrong area.

2- Mounting Bracket:

Innovative design, flexible, and accurate to adjust the mounting angle. Aluminum alloy materials, anti-corrosion.

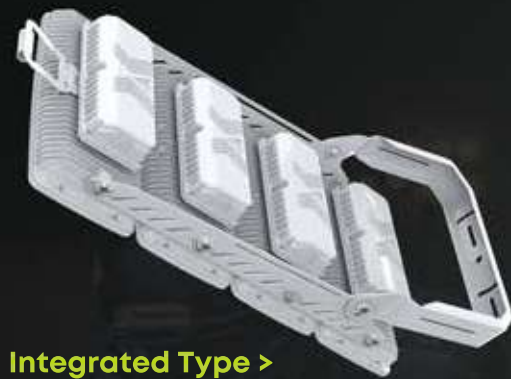
3- Tempered Glass:

The tempered glass prevents the PC lens from yellowing when the fixture is exposed. It also protects the lens from sand and dust deposition. Ideal for outdoor applications.

4- Hand Grip:

Convenient for workers to carry when installation.

Power Supply



Integrated Type >



Split Type >

INF- adopts modular design and module splicing to enrich product categories; The module adopts a fin design, the heat dissipation area is larger, which is conducive to air circulation, thus effectively reducing the temperature of the product; The power box adopts a single or competitive power supply for better heat dissipation.

INF-D Diffused Type



Diffused type refers to that the direction of the light source is not directly illuminated to the designated area, but is reflected by magnum reflector to the designated area.

Pros: Light source is placed aside, low eye irritation.

Comfortable light vision, glare rate UGR<30;

Cons: The lighting effect may be a bit less efficient than straight type, limited distribution angle.

T2 or T3 distribution is available.

INF-SG Straight Down Type

Adjustable Visor



INF straight down type (INF/INFSG) is more suitable for stadium lighting, wide range options of lighting distribution can meet the needs of the venue. The precise optical design ensures optimum lighting performance. Tempered glass and visor are optional. The visor is designed to allow effective light to reach the designated area and prevent excess light from spilling out to avoid the impact on the surrounding environment. INF uses an adjustable visor (sectional type), which can be adjusted to an angle of < 25 degrees by hand screw. Compared with a single fixed visor which is mainly used on the market, our visor is more flexible and easy to maintain.



INFSG

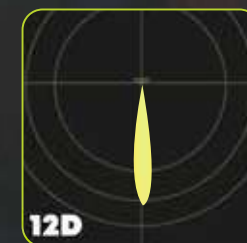
With Tempered Glass
Beam Angle:
12° available



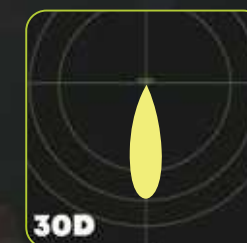
INFSG

With Tempered Glass
(50*50) corresponds to
12°, 30°, 60°, 90° and T1 to T3;
120° without optical lens

Photometric Design



12D



30D



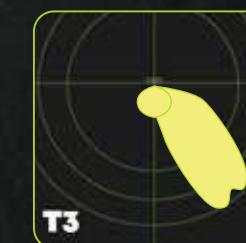
60D



90D



T2



T3

> Application Reference



**NO FLICKER ON
TV BROADCAST**

- Glare has always been a concern with sports lighting and it has got increasingly more attention with higher output fixtures. The standard visor block lights outside of the main beam, so from other viewing angles the fixture virtually disappears. The visor is also designed to have minimum impact on the total light output.
- INF sports lighting support ultra-slow motion. It delivers a flicker-free, HDTV broadcasting for the enjoyment of the audience.

> Application Reference



*Due to the constant improvements in product development, individual parameters might change. Please refer to our sales or R&D team for most up-to-date content as specifications are subject to change without notice.

Parameter Table

Electrical Specifications		
Model	AOK-300WINF	AOK-600WINF
Luminaire power:	300W	600W
Input voltage:	Standard 100-277VAC, 50/60Hz.	Standard 100-277VAC, 50/60Hz.
THD	<20%	<20%
PF:	>0.98	>0.98
Operating temperature:	-40°C to 50°C (-40 °F to 122 °F)	-40°C to 50°C (-40 °F to 122 °F)
Compatible with:	DALI, 1-10V, Nema, Zhaga, Presence Detection Sensor. Dim-to-Off.	DALI, 1-10V, Nema, Zhaga, Presence Detection Sensor. Dim-to-Off.
Surge protection:	10kV / 20kV optional	10kV / 20kV optional
Photometric Specifications		
Luminous flux (lm) (CRI 70Ra, 4000K, Std Dev ±3%)	INFD-L3030 : 36900lm; INFD-L5050 : 41400lm;	INFD-L3030 : 73200lm; INFD-L5050 : 82200lm;
	INFD-L3030 : 36900lm; INFD-L5050 : 41400lm;	INFS-L5050 : 84600lm; INFSG-L5050 : 89400lm
Luminaire efficacy:	INFD-L3030 : 123lm/W; INFD-L5050 : 138lm/W;	INFD-L3030 : 122lm/W; INFD-L5050 : 137lm/W;
	INFS-L5050 : 142lm/W; INFSG-L5050 : 150lm/W;	INFS-L5050 : 141lm/W; INFSG-L5050 : 149lm/W;
ULR	= 0%, @ Luminaire inclination 0°	= 0%, @ Luminaire inclination 0°
CCT:	2700K, 3000K, 4000K, 5000K, 5700K, 6500K	2700K, 3000K, 4000K, 5000K, 5700K, 6500K
CRI:	70Ra, 80Ra, 90Ra optional	70Ra, 80Ra, 90Ra optional
Beam angle:	12°, 30°, 60°, 90°, 120°, TYPE II 35°*110°, TYPE III 50°*120°	12°, 30°, 60°, 90°, 120°, TYPE II 35°*110°, TYPE III 50°*120°
Mechanical Specifications		
IP/IK:	IP66/IK08, according to standard EN 60529 and EN 62262	IP66/IK08, according to standard EN 60529 and EN 62262
Vibration resistance	3G, conform to standard IEC 68-2-6.	3G, conform to standard IEC 68-2-6.
SCx:	Front 0.1518 m², Side: 0.0336 m²	Front 0.3003 m², Side: 0.0935 m²
Housing:	Heavy-duty die-cast aluminum (EN AC-46100)	Heavy-duty die-cast aluminum (EN AC-46100)
Surface treatment:	80 micron epoxy and polyester paint.	80 micron epoxy and polyester paint.
Paint color:	Black, Silver, Custom request	Black, Silver, Custom request
Cable:	Pre-wired with 1.5m cable.	Pre-wired with 1.5m cable.
Mounting:	Under Mount Yoke	Under Mount Yoke
LED		
LED Manufacturer	LUMILEDS	LUMILEDS
LED model	Lumileds 3030/Lumileds 5050	Lumileds 3030/Lumileds 5050
Number of Module:	1 pc	2 pcs
Number of LED:	INFD- Lumileds3030 : 424 ; Lumileds5050 : 184	INFD- Lumileds3030 : 848 ; Lumileds5050 : 368
	INFS- Lumileds5050 : 112 ; INFSG-Lumileds5050 : 216	INFS- Lumileds5050 : 224 ; INFSG-Lumileds5050 : 432
Working current of single LED:	INFD- Lumileds3030 : 108.5mA; Lumileds5050 : 62.5mA	INFD- Lumileds3030 : 108.5mA; Lumileds5050 : 62.5mA
	INFS-Lumileds5050 :82.2mA ; INFSG-Lumileds5050 : 53.3mA	INFS-Lumileds5050 :82.2mA ; INFSG-Lumileds5050 : 53.3mA
Working voltage of single LED:	INFD-Lumileds3030 : 6V; Lumileds5050 : 24V	INFD-Lumileds3030 : 6V; Lumileds5050 : 24V
	INFS-Lumileds5050 :30V ; INFSG-Lumileds5050 :24V	INFS-Lumileds5050 :30V ; INFSG-Lumileds5050 :24V
LED board Input Current:	INFD-With Lumileds3030 : 5.7505A; With Lumileds5050 : 5.75A	INFD-With Lumileds3030 : 5.7505A; With Lumileds5050 : 5.75A
	INFS-Lumileds5050 :4.6032mA ; INFSG-Lumileds5050 : 5.75mA	INFS-Lumileds5050 :4.6032mA ; INFSG-Lumileds5050 : 5.75mA
LED board Input Voltage:	INFD-With Lumileds3030 : 48V; With Lumileds5050 : 48V	INFD-With Lumileds3030 : 48V; With Lumileds5050 : 48V
	INFS-Lumileds5050 :60V ; INFSG-Lumileds5050 :48V	INFS-Lumileds5050 :60V ; INFSG-Lumileds5050 :48V
Enclosure:	With/Without Tempered Glass	With/Without Tempered Glass
Others		
Lifespan:	L90B10 > 100000hrs, @Ta 25°C	L90B10 > 100000hrs, @Ta 25°C
Certification	CB, CE, RoHS, ENEC (The company is ISO 9001 and ISO 14001 certified.)	CB, CE, RoHS, ENEC (The company is ISO 9001 and ISO 14001 certified.)
Dimensions:	544*406*199mm	734*544*336mm
Weight:	12.7 kg	26kg
Carton Size:	660*510*270mm	820*700*270mm
Gross Weight:	13.8kg	28kg
Application field	Stadium, airport, container port, railway station	Stadium, airport, container port, railway station

Electrical Specifications		
Model	AOK-900WINF	AOK-1200WINF
Luminaire power:	900W	1200W
Input voltage:	Standard 100-277VAC, 50/60Hz.	Standard 100-277VAC, 50/60Hz.
THD	<20%	<20%
PF:	>0.98	>0.98
Operating temperature:	-40°C to 50°C (-40 °F to 122 °F)	-40°C to 50°C (-40 °F to 122 °F)
Compatible with:	DALI, 1-10V, Nema, Zhaga, Presence Detection Sensor. Dim-to-Off.	DALI, 1-10V, Nema, Zhaga, Presence Detection Sensor. Dim-to-Off.
Surge protection:	10kV / 20kV optional	10kV / 20kV optional
Photometric Specifications		
Luminous flux (LM) (CRI 70Ra, 4000K, Std Dev ±3%)	INFD-L3030 : 108900LM; INFD-L5050 : 122400LM;	INFD-L3030 : 144000LM; INFD-L5050 : 162000LM;
	INFS-L5050 : 126000LM; INFSG-L5050 : 133200LM;	INFS-L5050 : 166800LM; INFSG-L5050 : 176400LM;
Luminaire efficacy:	INFD-L3030 : 121LM/W; INFD-L5050 : 136LM/W;	INFD-L3030 : 120LM/W; INFD-L5050 : 135LM/W;
	INFS-L5050 : 140LM/W; INFSG-L5050 : 148LM/W;	INFS-L5050 : 139LM/W; INFSG-L5050 : 147LM/W;
ULR	= 0%, @ Luminaire inclination 0°	= 0%, @ Luminaire inclination 0°
CCT:	2700K, 3000K, 4000K, 5000K, 5700K, 6500K	2700K, 3000K, 4000K, 5000K, 5700K, 6500K
CRI:	70Ra, 80Ra, 90Ra	70Ra, 80Ra, 90Ra
Beam angle:	12°, 30°, 60°, 90°, 120°, TYPE II 35°*110°, TYPE III 50°*120°	12°, 30°, 60°, 90°, 120°, TYPE II 35°*110°, TYPE III 50°*120°
Mechanical Specifications		
IP/IK:	IP66/IK08, according to standard EN 60529 and EN 62262	IP66/IK08, according to standard EN 60529 and EN 62262
Vibration resistance	3G, conform to standard IEC 68-2-6.	3G, conform to standard IEC 68-2-6.
SCx:	Front 0.4396 m², Side: 0.1270 m²	Front 0.5790 m², Side: 0.1592 m²
Housing:	Heavy-duty die-cast aluminum (EN AC-46100)	Heavy-duty die-cast aluminum (EN AC-46100)
Surface treatment:	80 micron epoxy and polyester paint.	80 micron epoxy and polyester paint.
Paint color:	Black, Silver, Custom request	Black, Silver, Custom request
Cable:	Pre-wired with 1.5m cable.	Pre-wired with 1.5m cable.
Mounting:	Under Mount Yoke	Under Mount Yoke
LED		
LED Manufacturer	LUMILEDS	LUMILEDS
LED model	Lumileds 3030/Lumileds 5050	Lumileds 3030/Lumileds 5050
Number of Module:	3 pcs	4 pcs
Number of LED:	INFD- Lumileds3030 : 1272 ; Lumileds5050 : 552	INFD- Lumileds3030 : 1696 ; Lumileds5050 : 736
	INFS- Lumileds5050 : 336 ; INFSG-Lumileds5050 : 648	INFS- Lumileds5050 : 448 ; INFSG-Lumileds5050 : 864
Working current of single LED:	INFD- Lumileds3030 : 108.5mA; Lumileds5050 : 62.5mA	INFD- Lumileds3030 : 108.5mA; Lumileds5050 : 62.5mA
	INFS-Lumileds5050 :82.2mA ; INFSG-Lumileds5050 : 53.3mA	INFS-Lumileds5050 :82.2mA ; INFSG-Lumileds5050 : 53.3mA
Working voltage of single LED:	INFD-Lumileds3030 : 6V; Lumileds5050 : 24V	INFD-Lumileds3030 : 6V; Lumileds5050 : 24V
	INFS-Lumileds5050 :30V ; INFSG-Lumileds5050 :24V	INFS-Lumileds5050 :30V ; INFSG-Lumileds5050 :24V
LED board Input Current:	INFD-With Lumileds3030 : 5.7505A; With Lumileds5050 : 5.75A	INFD-With Lumileds3030 : 5.7505A; With Lumileds5050 : 5.75A
	INFS-Lumileds5050 :4.6032mA ; INFSG-Lumileds5050 : 5.75mA	INFS-Lumileds5050 :4.6032mA ; INFSG-Lumileds5050 : 5.75mA
LED board Input Voltage:	INFD-With Lumileds3030 : 48V; With Lumileds5050 : 48V	INFD-With Lumileds3030 : 48V; With Lumileds5050 : 48V
	INFS-Lumileds5050 :60V ; INFSG-Lumileds5050 :48V	INFS-Lumileds5050 :60V ; INFSG-Lumileds5050 :48V
Enclosure:	With/Without Tempered Glass	With/Without Tempered Glass
Others		
Lifespan:	L90B10 > 100000hrs, @Ta 25°C	L90B10 > 100000hrs, @Ta 25°C
Certification	CB, CE, RoHS, ENEC (The company is ISO 9001 and ISO 14001 certified.)	CB, CE, RoHS, ENEC (The company is ISO 9001 and ISO 14001 certified.)
Dimensions:	994*544*336mm	1258*544*336mm
Weight:	38kg	50kg
Carton Size:	1080*700*270mm	1330*700*270mm
Gross Weight:	40kg	52.5kg
Application field	Stadium, airport, container port, railway station	Stadium, airport, container port, railway station

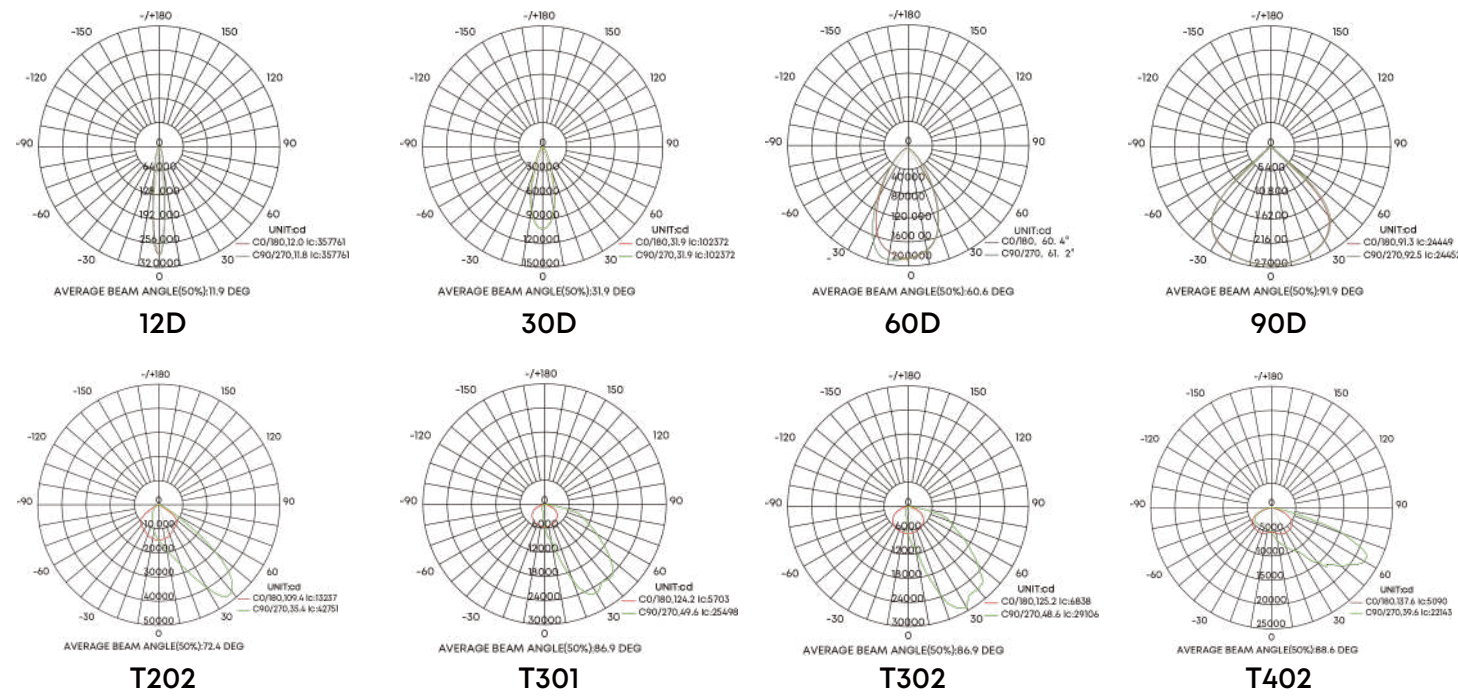
INF Series Specification Sheet

*Due to the constant improvements in product development, individual parameters might change. Please refer to our sales or R&D team for most up-to-date content as specifications are subject to change without notice.

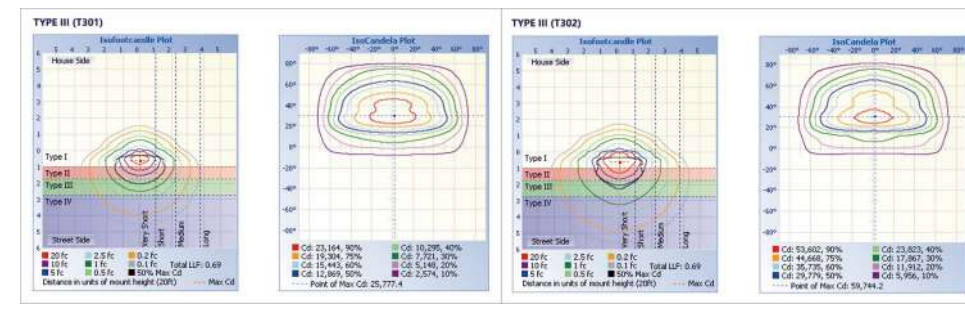
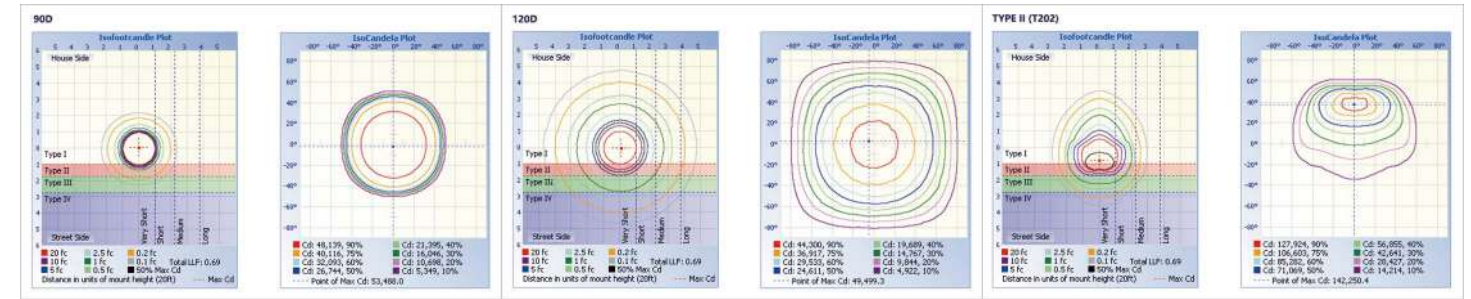
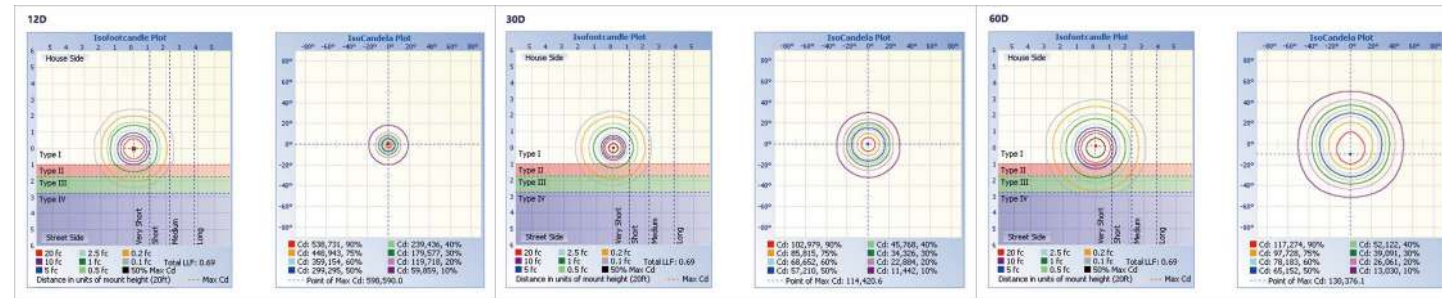
Ordering Information

AOK	WATTS	TYPE	VOLTAGE	LED CHIPS	TYPE OF SENSOR	CCT&CRI	DISTRIBUTION	MOUNT	OPTION
	300W INF	D	NV=100-277V	L3=LUMILED 3030	00=Without Sensor	2770=2700K 70CRI	12D=12°	A=Under Mount Yoke (Integrated type)	10KV SPD
	600W INF	S	EU=220-240V	L5=LUMILED 5050	SN=Motion Sensor	3070=3000K 70CRI	30D=30°	B=Under Mount Yoke (Split type)	20KV SPD
	900W INF	SG	HV=277-480V		PH=Photocell	4070=4000K 70CRI	60D=60°		Visor
	1200W INF				DV=Dimmable	5070=5000K 70CRI	90D=90°		Laser Aim
						5770=5700K 70CRI	120D=120°		
						6570=6500K 70CRI	T1=TYPE I		
						2780=2700K 80CRI	T2=TYPE II		
						3080=3000K 80CRI	T3=TYPE III		
						4080=4000K 80CRI			
						5080=5000K 80CRI			
						5780=5700K 80CRI			
						6580=6500K 80CRI			

Photometry

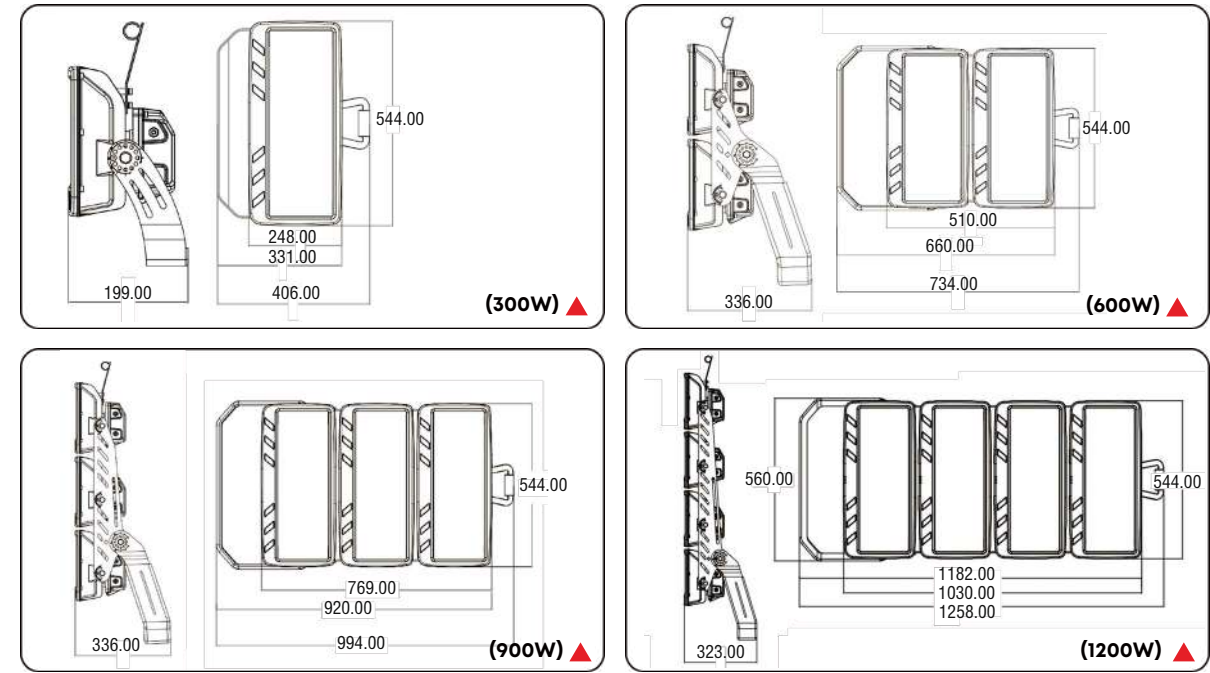


Illuminance Diagram



Dimension

Unit: mm



Accessories



*As the products are upgraded, the accessories may differ from those described in the pictures. Please consult with our sales team for updated details and order separately.

INF Series Specification Sheet

*Due to the constant improvements in product development, individual parameters might change. Please refer to our sales or R&D team for most up-to-date content as specifications are subject to change without notice.



Illuminate Your Future



5 Year Limited Warranty,
10 Year Preferred Warranty.
Please consult with our sales for detailed agreement.

Wally@aokledlight.com
www.aokledlight.com
+1 626-986-4050 (US)
+86 755 2357 9148 (CN)

Manufacturing: Building 1 & 4, St. George's Science and Technology Industrial Park, Shajing Street, Shenzhen, China, 518124.
Fuzhou HQ: Room 301, Yujing Business Center Zone 1, No. 12 Baihuazhou road, Cangshan district, Fuzhou, China, 350007
NorthAmerica HQ: 18541 E Gale Ave, City of Industry, CA91748 USA

Copyright ©2023 AOK LED LIGHT CO., LTD. All Right Reserved.